

Repair and maintenance for
servo systems, robotics and **electronics**



 **GDM**
GENERAL DRIVER MOTOR

 **GDM**
GENERAL DRIVER MOTOR





WHO ARE WE?

Founded in 2008, **GDM** is the result of over 30 years of experience and dedication by its founders in the repair of servo motors, drivers, frequency inverters and industrial electronics.

We currently offer services in Spain, Portugal, England, Czech Republic, Slovakia and Poland and are working to expand to other markets.

Our motivation is customer service, so we put all our effort into achieving full customer satisfaction, constantly working to deliver total reliability and maximum success.

By choosing to partner with **GDM**, you have the security of dealing with a trustworthy company where the priority is always the client.

SOME BRANDS WE WORK WITH

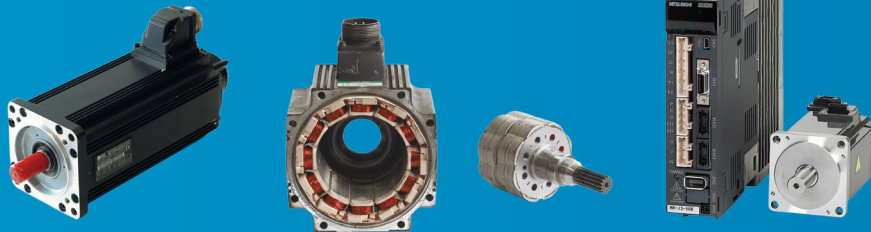


WHAT DO WE DO?

Made up of several specialized technical departments, we provide reliable high quality electromechanical, electric, electronic, and robotic service repair and maintenance.

In **GDM** we are able to service, repair, and remanufacture nearly any brand name product on the market.

We serve all sectors of industry, including machine tool, aerospace, automotive, robotics, printing, food, glass, textile, plastic, automation etc.



Repair Service 24 hours

- Control Drivers AC / DC.
- Inverters.
- Starters.
- Screens.
- Power Supplies.
- Electronic cards.
- Servo Motor AC / DC.
- Spindle motor.
- Brushless.
- Electro spindles.
- Disk motor.
- Special motors.

HOW?

GDM facilities have the most advanced technology for the execution of these services.

Feedback devices: OEM replacement encoders.

Test and diagnostic analysis of serial encoders, incremental (IVPP-TTL, HTL) and absolute (Hiperface, EnDat, SSI).

Test and diagnostic analysis of resolvers.

Test and diagnosis Hall Effect and taco.

BFL to fault locator for analog and digital circuits.

Tektronic system, test IGBT, thyristor etc. (power).

Multiple station instrumentation - test booster - electronic commutation alignment signal.

Test benches control drivers.

Test benches-brushless servomotor with Nm torque transducer.

Detector for temperature, vibration, static balance and dynamic balance.

Insulation Test - winding stator Baker ST 203.

Dielectric test TecnoLab RD 6.

Test and measurement magnetic field rotor.

Several oscilloscopes, multimeters, power supplies, generator functions, SMD soldering stations etc.

Test bank Kuka Robots - ABB.

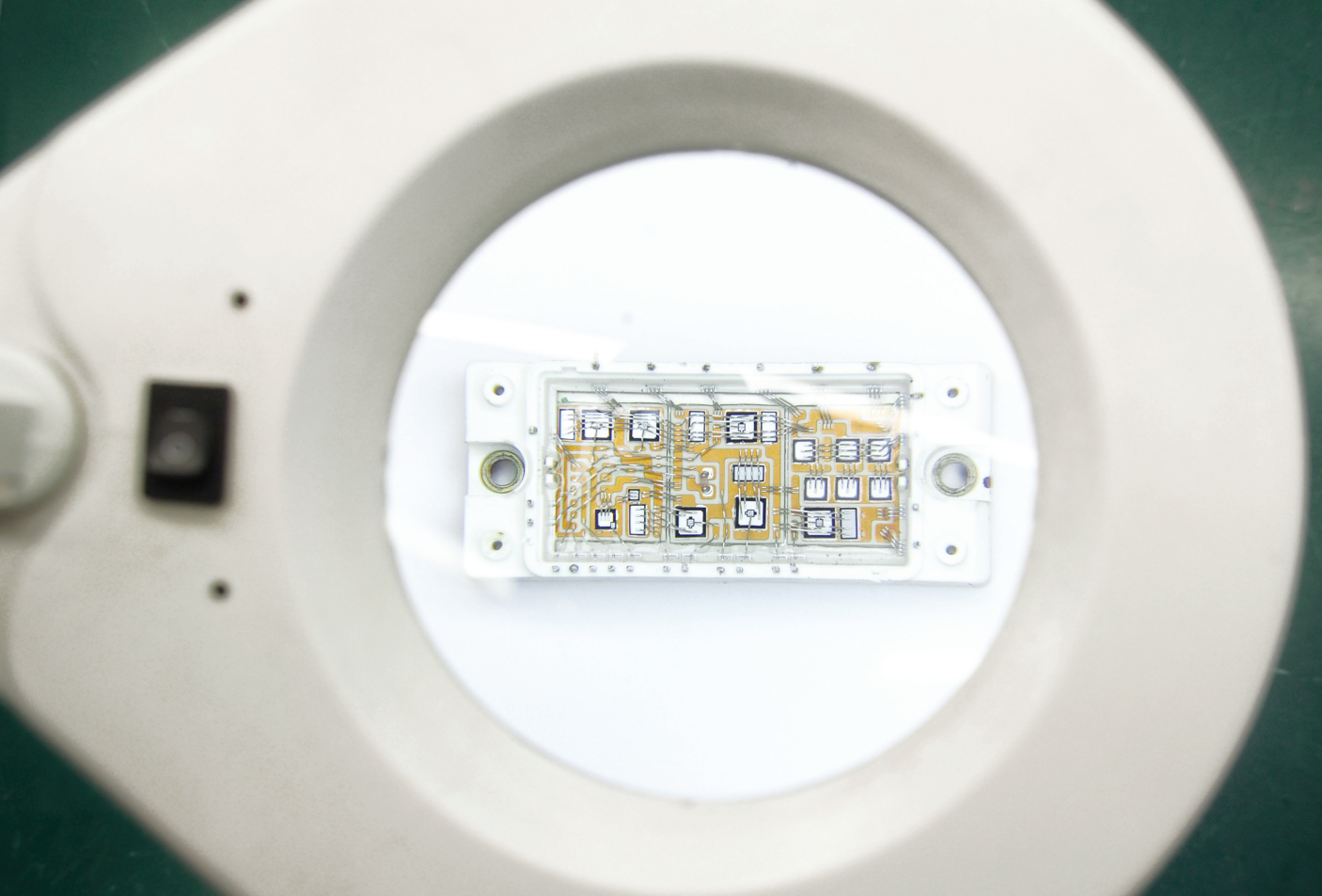
Test benches inverter AC / DC - 100KW.

Experienced technicians and engineers (minimum 10 years).

Design and implementation process for subsequent certification ISO 9001:2000.

Reports and final verification check.

General test specifications.



COMMITMENT TO QUALITY

To achieve our objective of maximum quality in all our work we have:

High Technology test equipment.

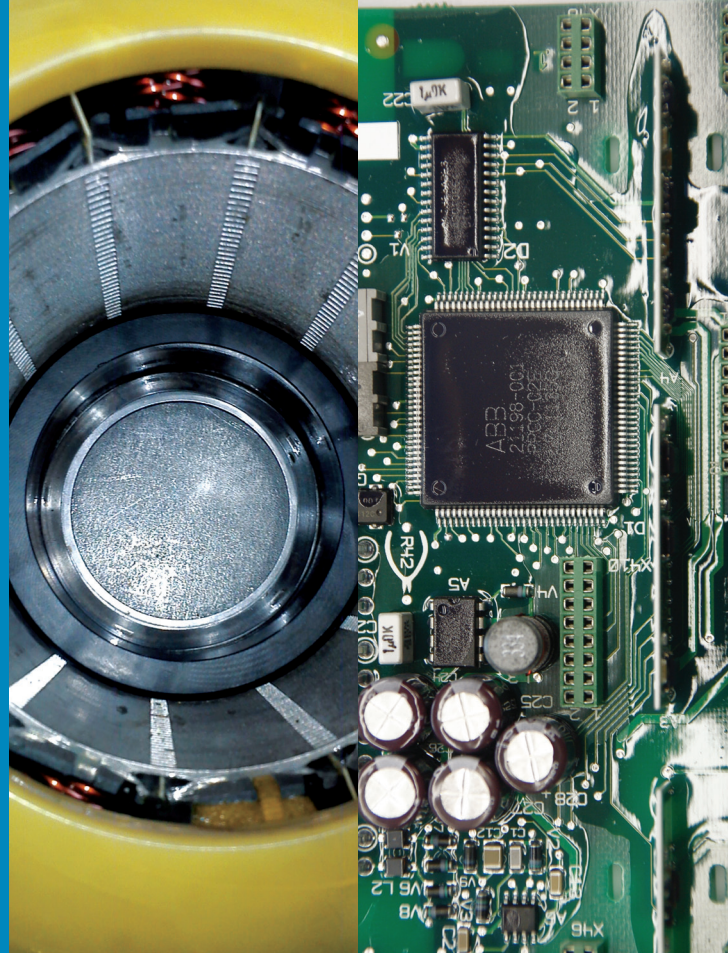
Technicians and engineers in constant training.

More than 65 test benches for final verification tests.

Continuous formation, education and R & D in new technologies.

Test standards:

ABB | Allen Bradley | Atlas Copco | Baldor | Bautz |
Baumüller | BR | Control Techniques | Elau | Fanuc |
Indramat | Kollmorgen | Kuka | Lenze | Mitsubishi |
Parker | Rexroth | Sanyo Denki | SEM | SEW | Siemens
| Tamagawa | Yaskawa | ...



WWW.GENERALDRIVERMOTOR.COM



Address C/ Pino Alvar, Parcela 124
Nave 8 (Pol. Ind. El Brizo)
47162 Aldeamayor de San Martín
(Valladolid)

Telephone
Fax 983 404 304
983 049 346

Mail comercial@generaldrivermotor.com

Customer Care:

983 528 205